



ACCELERATE YOUR SALESFORCE INNOVATION



www.ennube.solutions



sales@ennube.solutions



United States
2001 Addison St. Suite 300 Berkeley



ABOUT ENNUBE

Ennube is a software consulting company focused on salesforce.com solutions.

Our practices are trusted by enterprises and start-ups to help align business processes and drive insights from data. We help customers to design, implement, and support salesforce.com software solutions and have expertise in DevOps, Salesforce and Marketing Cloud, Tableau and Data Analytics. Ennube Solutions is a certified Salesforce AppExchange ISV and Consulting Partner with headquarters in Berkeley, California.



 registered consulting
partner

 appexchange
partner

 registered ISV
partner

 **WOMEN
OWNED**
CERTIFIED BY WOMEN'S BUSINESS ENTERPRISE
NATIONAL COUNCIL

 **SMALL & MINORITY
BUSINESS ENTERPRISE**

WHAT PROBLEMS WE SOLVE?

We don't have the knowledge to do that in house.



We don't have a large enough team to take on challenge that big.



We need a team to work on US business hours.

West Coast Team
Headquarters
Executives & Sales

East Coast Team
Business Operations
Consultants

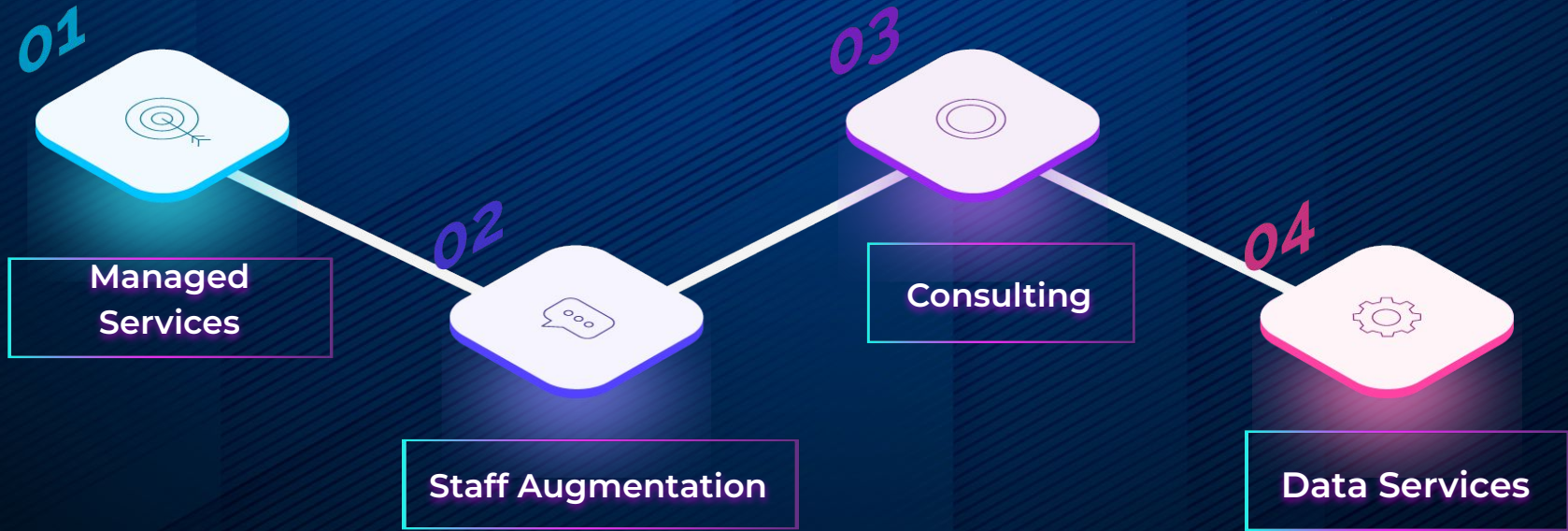
Ecuador
15 People in Ecuador
Development Hub
SDR Sales Team

LatAm is attractive for talent, it has a young population that is tech savvy and eager to join the global skills marketplace.

Buenos Aires, Argentina
2 Gold Partners

**ENNUBE TALENT
OPPORTUNITY**

OUR SERVICES



MANAGED SERVICES



Flexible



Standard Service:

10 hours per week, 3 months.

The hours are yours, use them when you need them. Front load or finish the term burning hot, the hours are yours.

Capable



Cross functional teams available for you needs.

Need ad developer for 20 hours? Done.

Need an architect for 4 hours? No problem.

Available



Set your SLAs with our team and we will meet your expectations. We have teams in LatAm who work on US business hours available at 9am EST or 5pm PST.

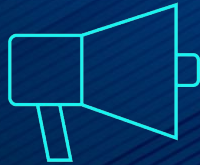
Certified



Rest assured you are working with the best. We continuously train and certify our consultants, each with challenges and goals for the year to always be learning and improving.

STAFF AUGMENTATION

WE PROVIDE YOU WITH THE ABILITY TO GROW RAPIDLY WITH THE RIGHT PROFESSIONALS.



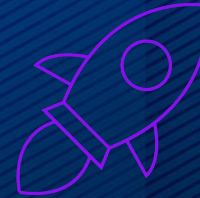
Talented and Experienced pool of experts.

We mainly rely on our team, but we also count on a solid network of professionals, in order to face tech challenges.



Save time and budget.

We cover local fees for you and adapt to your timing needs.



Upskilling your in-house team.

Thanks to our prior experience we are ready to add value to your team.

DATA SERVICES

Full Stack Data Capabilities

Data Engineering and Architecture

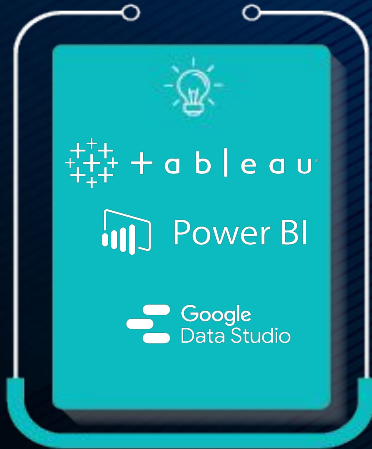
Complex Data Model Building

Data Governance & Strategy

Data Visualizations

- Tableau
- Power BI
- Custom Visualizations

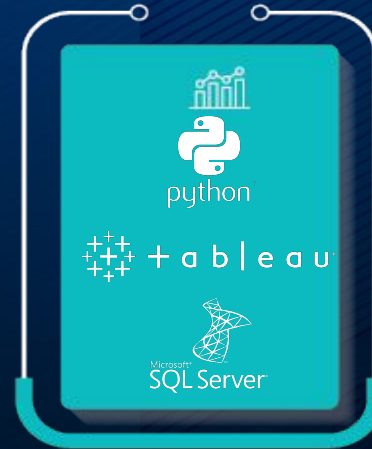
DATA ANALYTICS



DATA ORCHESTRATION



DATA SCIENCE



DATA WAREHOUSE



OUR DATA PRACTICE EXPERIENCE

Adaptive biotechnologies™



- Created unique integration between Veeva Systems CRM and Salesforce CRM utilizing Informatica Cloud, supporting complex file transfers.
- Integrated Tableau Dashboards dynamically with Salesforce records.

Berkeley UNIVERSITY OF CALIFORNIA



- Integrated their database with marketing cloud, upserting into data extensions for each school within the college automatically utilizing the marketing cloud API.
- Used Python, SQL Server and AMPScript to accomplish dynamic integration.

SCSglobal

SERVICES



- A data and analysis tool was created that allowed visualizing, reviewing and working with the data coming through a survey tool.
- We worked with MySQL, Text File, JSON File, PostgreSQL & Salesforce.

NEXT?

- A diverse and unique set of clients found success working with our data practice to complete their projects on time and within budget.
- What projects do you want to get done this year?

Project:

Tableau
GreenHouse
Gas Emissions
Analytics App

Service:

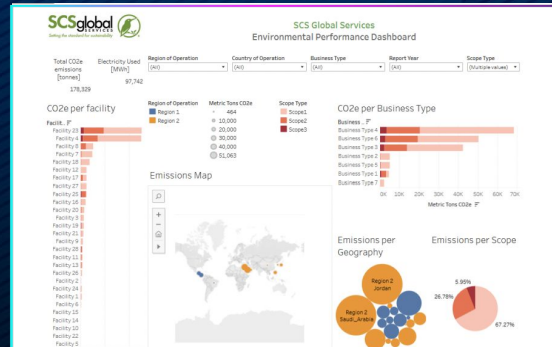
Data
Integration
600 hrs.

Ennube Solutions resources:

Project Manager,
Salesforce
Analyst,
Developer,
Tableau Analyst y
Tableau Architect.

Technology:

MySQL, Text
File, JSON File,
PostgreSQL &
SalesForce.



SCS GLOBAL, USA

The Tableau GreenHouse Gas Emissions Analytics Application its main objective was to create a scalable solution that allows SCS staff to onboard multiple clients into the GreenHouse Gas Emissions.

The secondary objective is to set up a multi-tenancy cloud database architecture for other SCS programs to leverage Tableau visualization and Salesforce community features.

By leveraging Tableau's analytic dashboard capabilities, a cloud based database architecture, a cloud based survey tool and the salesforce.com community user interface we will be able to create an automated application that collects, organizes/stores and then presents data back to users. Users will be generated a login to the community where they will be able to take the survey, at which point the data will be saved into the cloud based database and then manipulated by Tableau Prep handled by SCS staff.



OUR EXPERIENCE

Project:

Historical Marketing Data

Service:

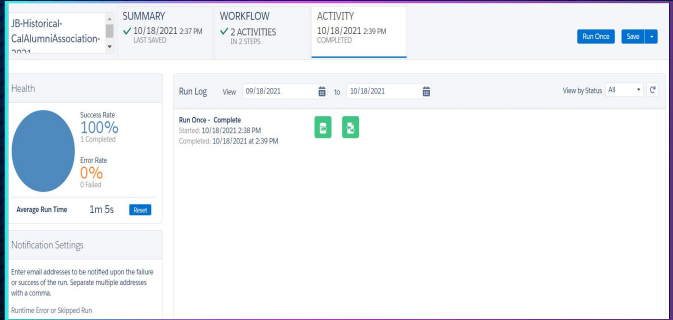
Data Extraction
56 hrs.

Ennube Solutions resources:

Project Manager, Data Consultant.

Technology:

SQL Query (SQL), Journey Builder (JB).





Berkeley
UNIVERSITY OF CALIFORNIA

OUR EXPERIENCE

UC BERKELEY, USA

UC Berkeley's development unit has hired Ennube Solutions to assist in a Marketing Cloud data extraction. The objective was to obtain and filter marketing data that contains historical information that accelerates as remarketing subscribers, in addition to optimizing marketing strategies.

Project:

Pharma Order
Forecasting and
Contract
Management
Process

Service:

Data Modeling

Ennube Solutions resources:

Project Manager,
Data Consultant,
Salesforce
Developer,
Salesforce Architect,
Salesforce Admin

Technology:

Salesforce, APEX,
Lightning Web
Components, JS
Angular, JS Node,
Statistical
Distribution
Mapping

Adaptive, USA

The data model that encompassed this project was largely already built and the team was using it. The most important additions to the model were the Forecast and Forecast month tables. All other objects in the schema had been updated to relate to the Forecast and Forecast Month tables. However, changes to processes such as "Contract Modification" and the addition of new processes such as generating forecasts and recalculating forecasts were added to the existing data model.



Get More Resources Now.

Contact us to get started expanding your team today.

Follow us:



Ennube Solutions



Ennube Solutions



@EnnubeSolutions

For more information visit:

www.ennube.solutions

